

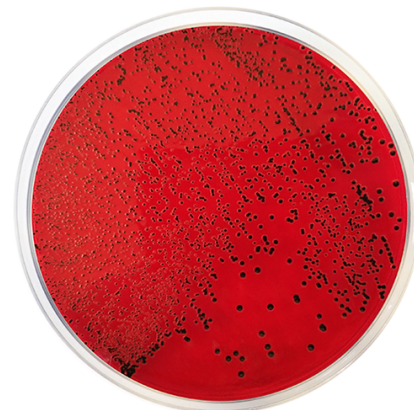
XLD Agar (Xylose Lysine Desoxycholate Agar) EP/USP

N° Cat: 1080

N° Lote: 101211

Re-test Date: 1/2024

Regulations: USP / European Pharmacopoeia



Formula in g/l

Bacteriological agar	13,5	Ferric ammonium citrate	0,8
L-Lysine	5	Phenol red	0,08
Sodium chloride	5	Sodium deoxycholate	2,5
Sodium thiosulfate	6,8	Sucrose	7,5
Xylose	3,5	Yeast extract	3
Lactose monohydrate	7,5		

Quality control

Solubility	Appearance	Color of the dehydrated medium	Color of the prepared medium	Final pH (25°)	Lote pH
w/o rests	Fine powder	Pink	Reddish-orange	7,4±0,2	7,4

Microbiological test

According to Pharmacopoeia; Salmonella typhimurium ATCC 14028.

Incubation conditions: (30-35 °C / 18-48 h).

Inoculation conditions: (<=100 CFU).

Rest of strains:

Incubation conditions: (30-35 °C / 18-48 h).

Microorganisms	Specification	Characteristic reaction
Shigella flexneri ATCC 12022	Good growth	Red colonies
Salmonella typhimurium ATCC 14028	Good growth	Clear red colonies (black center)
Escherichia coli ATCC 25922	Partial inhibition	Yellow (precipitate) colonies
Staphylococcus aureus ATCC 25923	Inhibition	
Staphylococcus aureus ATCC 6538	Inhibition	
Escherichia coli ATCC 8739	Partial inhibition	Yellow (precipitate) colonies

This certificate is an electronic copy of the certificate available in our laboratory and does not require signature.