

making a difference



GROW YOUR CELLS BEYOND THE LIMITS

CELLSTAR®

Cell Culture

Flasks / Dishes / Plates



greiner
BIO-ONE

Based on automated production processes with quality controls, we provide immaculate, high-quality products for all areas of cell culture.



OPTIMISED CELL CULTURE SURFACES

Applications in cell biology such as the cultivation of primary cells, stem cells and immortalised cells in adherent and suspension culture became standard practice in laboratories around the world. With its product line, CELLSTAR® Greiner Bio-One offers the ultimate solution for

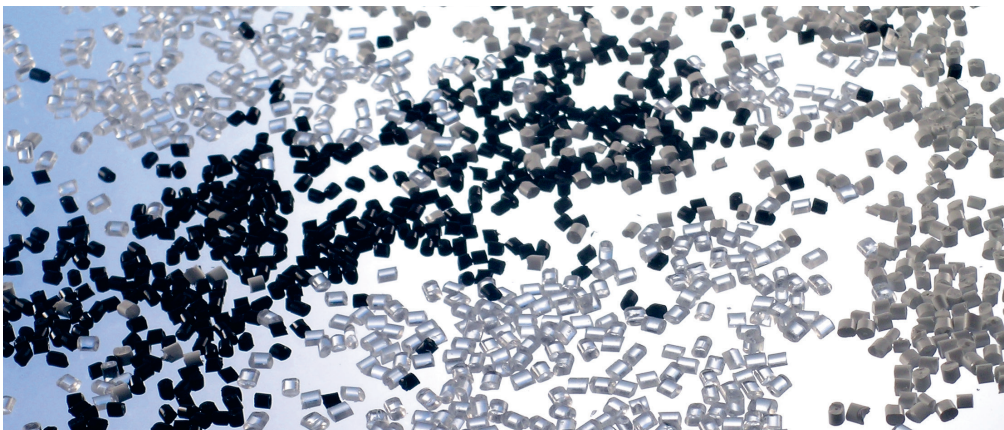
these classical and advanced cell culture techniques. A broad spectrum of formats and different surface treatments covers the entire range of applications in cell biology including the propagation of cells, the performance of cell-based assays and elementary imaging procedures.

**APPLICATION NOTES**

- / **siRNA-dependent gene silencing on various cell culture surfaces (F071105)**
- / **Improved cultivation / differentiation of embryonic stem cells (F073117)**
- / **Cultivation and differentiation of hADSCs with CELLSTAR® and CELLCOAT® products (F073113)**

The secrets of the ongoing success of the CELLSTAR® product line is its high quality and reliability. This is achieved through the use of virgin, ultrapure and noncytotoxic polymers from trustworthy suppliers with whom Greiner has been dealing for many years. Our experience of producing consistent cell culture treated surfaces alongside with the highest standards for quality control of outgoing goods enable us to supply our

customers with products they trust and value. Consequently, all cell culture products feature lowest levels of detectable endotoxins and are free of detectable DNase, RNase and human DNA. All cell culture products are labelled with expiry date and lot number in order to ensure transparency of product processes and retraceability of our products throughout the production process.

**HIGH-QUALITY RAW MATERIAL**

Exclusively high-grade polystyrene is used as raw material for manufacturing our cell culture products.

OPTIMISED CELL CULTURE SURFACES

CELLSTAR® TC



SURFACE

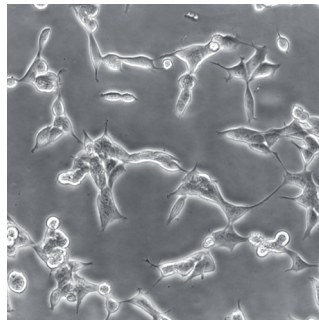
/ Normal cell adhesion

FEATURE

/ Physical surface treatment, hydrophilic surface

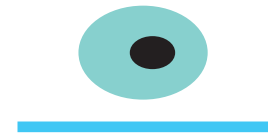
APPLICATION

/ For adherent cell lines



CELLSTAR® TC is the standard surface for the cultivation of adherent cells. The special physical surface treatment leads to the incorporation of polar groups such as carboxyl and hydroxyl residues, which functionalised the hydrophobic polystyrene surface resulting in improved and consistent cell attachment.

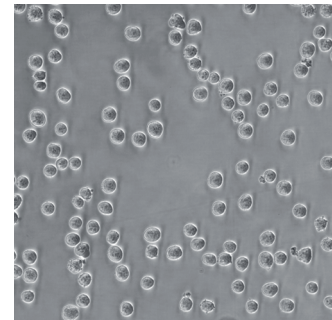
SUSPENSION



/ Reduced cell adhesion

/ Hydrophobic surface

/ For non-adherent cells or suspension-adapted cells

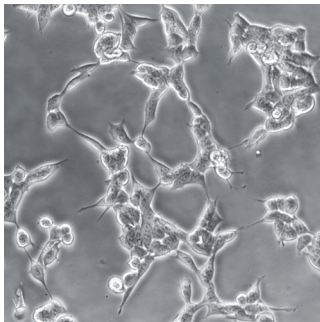


CELLSTAR® suspension culture vessels are well suited for suspension culture of non-adherent cells due to the non-polarity of the surface which does not enable hydrophilic interactions between the surface and the cells.

ADVANCED TC



- / Enhanced cell adhesion
- / Synthetic chemical surface treatment, highly hydrophilic
- / For fastidious and transfected cells and serum / reduced culture conditions

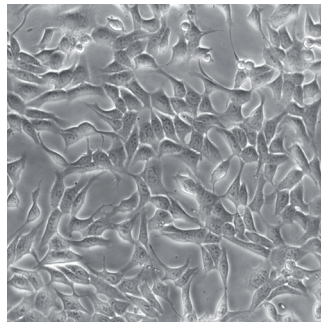


The Advanced TC surface is based on polymer modification resulting in a highly hydrophilic surface which positively influences cellular features and functions. Advanced TC facilitates consistent and homogenous cell attachment, increasing the overall cell yield and reducing cell loss.

CELLCOAT®



- / Highly enhanced cell adhesion
- / Synthetic / biological coated surface
- / For fastidious (primary / stem) cells and serum-free / reduced culture conditions

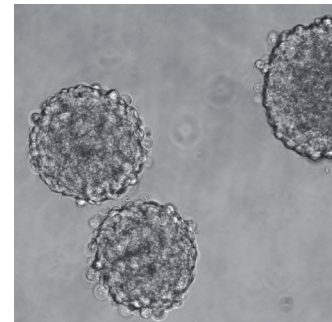


The CELLCOAT® product line comprises cell culture vessels which are coated with polypeptides facilitating the growth of many primary cells and stem cells of the extracellular matrix (Collagen Type I, Fibronectin, Laminin) or synthetic proteins (Poly-D-Lysine, Poly-L-Lysine).

CELL-REPELLENT



- / Prevented cell adhesion
- / Synthetic chemical surface treatment
- / For suspension culture of (semi)-adherent cell lines, spheroid culture of tumour or stem cells



The CELLSTAR® cell-repellent surface has been developed to effectively prevent cell attachment. Cell culture vessels equipped with this surface present an ideal platform for cultivating suspension cultures of semi-adherent and adherent cell lines as well as the formation of stem cell aggregates and spheroids.

CELLSTAR® CELL CULTURE FLASKS

50 ML / 250 ML / 550 ML / 650 ML

Standard or
filter screw cap

Optimal access
due to slanted
bottle neck

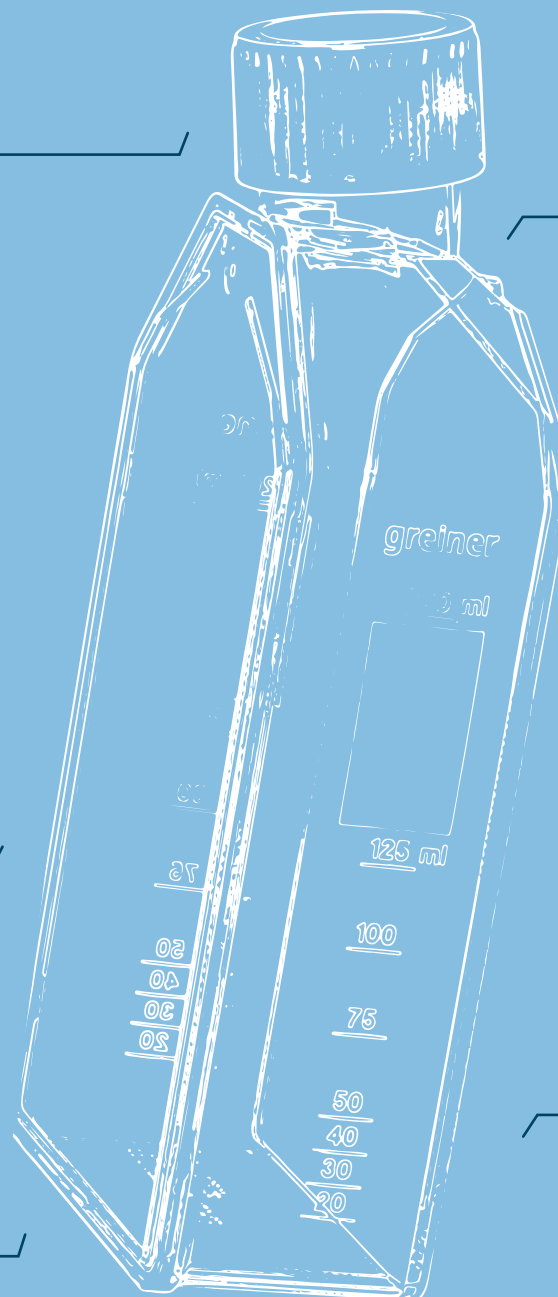
User friendly &
sterile packed

High transparency
& low intrinsic
fluorescence

Growth area for
adherent cells:
25, 75 and 175 cm²

Printed
graduation -
filling volume

Punch rim for
safe standing in
the incubator

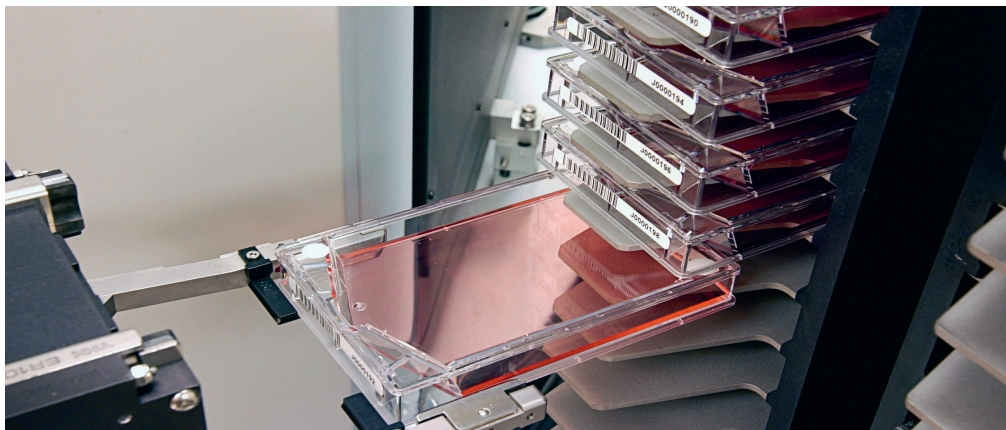


CELLSTAR® CELL CULTURE FLASKS

Greiner Bio-One offers standard and filter cap cell culture flasks with different surfaces. All Greiner Bio-One cell culture flasks are made of high-grade polystyrene and are free of detectable DNases, RNases, human DNA, endotoxins and are non-cytotoxic.

The specific design facilitates an optimal access of the flask with a cell scraper or pipette. The stacking rim on the top of the flasks ensures firm standing and easy stackability in the incubator. Both sides have a printed graduation for easier filling. In addition to the filter screw cap Greiner Bio-One offers a standard

screw cap with secured click-in ventilation position which guarantees the gas exchange within the flasks. For the maintenance of adherent cells Greiner Bio-One offers a specific physical surface treatment which ensures adhesion and proliferation of these cells whereas the novel Advanced TC and CELLCOAT® surfaces provides optimal conditions for the cultivation of sensitive and fastidious cells or the usage of restricted growth conditions. For suspension culture of non-adherent or semi-adherent cells, flasks with suspension or Cell-Repellent surface present an ideal platform.



CELLSTAR® AUTOFLASK

Cell culture flasks for
automated systems.
More information:
www.gbo.com

PRODUCT OVERVIEW

CELL CULTURE FLASKS

CELLSTAR® Standard Cell Culture Flasks

Raw material: PS, Surface treatment: TC

Item no.	Flask design	Growth area	Cap colour	Working volume	Total volume	Cap design	Triple-packed	Sterile	Qty. inner / outer
690160		25 cm ²	● red	5 ml - 10 ml	50 ml	screw cap		+	10 / 200
690170		25 cm ²	● red	5 ml - 10 ml	50 ml	screw cap		+	10 / 200
690160-TRI		25 cm ²	● red	5 ml - 10 ml	50 ml	screw cap	yes	+	10 / 130
690175		25 cm ²	● red	5 ml - 10 ml	50 ml	filter screw cap		+	10 / 200
690175-TRI		25 cm ²	● red	5 ml - 10 ml	50 ml	filter screw cap	yes	+	10 / 130
658170		75 cm ²	● red	15 ml - 38 ml	250 ml	screw cap		+	5 / 120
658170-TRI		75 cm ²	● red	15 ml - 38 ml	250 ml	screw cap	yes	+	5 / 90
658175		75 cm ²	● red	15 ml - 38 ml	250 ml	filter screw cap		+	5 / 120
658175-TRI		75 cm ²	● red	15 ml - 38 ml	250 ml	filter screw cap	yes	+	5 / 90
660160	flat	175 cm ²	● red	20 ml - 45 ml	550 ml	screw cap		+	5 / 50
660160-TRI	flat	175 cm ²	● red	20 ml - 45 ml	550 ml	screw cap	yes	+	5 / 40
660175	flat	175 cm ²	● red	20 ml - 45 ml	550 ml	filter screw cap		+	5 / 50
660175-TRI	flat	175 cm ²	● red	20 ml - 45 ml	550 ml	screw cap	yes	+	5 / 40
661160	high	175 cm ²	● red	20 ml - 85 ml	650 ml	screw cap		+	4 / 40
661175	high	175 cm ²	● red	20 ml - 85 ml	650 ml	filter screw cap		+	4 / 40

Cell Culture Flasks - Advanced TC

Raw material: PS, Surface treatment: Advanced TC

Item no.	Flask design	Growth area	Cap colour	Working volume	Total volume	Cap design	Sterile	Qty. inner / outer
690960		25 cm ²	● blue	5 ml - 10 ml	50 ml	screw cap	+	10 / 200
690975		25 cm ²	● blue	5 ml - 10 ml	50 ml	filter screw cap	+	10 / 200
658970		75 cm ²	● blue	15 ml - 38 ml	250 ml	screw cap	+	5 / 120
658975		75 cm ²	● blue	15 ml - 38 ml	250 ml	filter screw cap	+	5 / 120
660960	flat	175 cm ²	● blue	20 ml - 45 ml	550 ml	screw cap	+	5 / 50
660975	flat	175 cm ²	● blue	20 ml - 45 ml	550 ml	filter screw cap	+	5 / 50

Cell Culture Flasks - CELLCOAT®

Raw material: PS, Surface treatment: CELLCOAT®, Cap design: filter screw cap

Item no.	Flask design	Growth area	Protein coating	Cap colour	Working volume	Total volume	Qty. inner / outer
690950		25 cm ²	Collagen Type I	● red	5 ml - 10 ml	50 ml	10 / 50
658950		75 cm ²	Collagen Type I	● red	15 ml - 38 ml	250 ml	5 / 50
661950	high	175 cm ²	Collagen Type I	● red	20 ml - 85 ml	650 ml	5 / 40
690940		25 cm ²	Poly-D-Lysine	● red	5 ml - 10 ml	50 ml	10 / 50
658940		75 cm ²	Poly-D-Lysine	● red	15 ml - 38 ml	250 ml	5 / 50

CELL CULTURE FLASKS

Cell Culture Flasks - CELLCOAT®*Raw material: PS, Surface treatment: CELLCOAT®, Cap design: filter screw cap*

Item no.	Flask design	Growth area	Protein coating	Cap colour	Working volume	Total volume	Qty. inner / outer
661940	high	175 cm ²	Poly-D-Lysine	● red	20 ml - 85 ml	650 ml	5 / 40
690920		25 cm ²	Fibronectin	● red	5 ml - 10 ml	50 ml	10 / 10
658920		75 cm ²	Fibronectin	● red	15 ml - 38 ml	250 ml	10 / 10
661920	high	175 cm ²	Fibronectin	● red	20 ml - 85 ml	650 ml	5 / 5
690910		25 cm ²	Laminin	● red	5 ml - 10 ml	50 ml	10 / 10
658910		75 cm ²	Laminin	● red	15 ml - 38 ml	250 ml	10 / 10
661910	high	175 cm ²	Laminin	● red	20 ml - 85 ml	650 ml	5 / 5

Suspension Culture Flasks*Raw material: PS, Surface treatment: suspension*

Item no.	Flask design	Cap colour	Total volume	Cap design	Triple-packed	Sterile	Qty. inner / outer
690190		○ white	50 ml	screw cap		+	10 / 200
690190-TRI		○ white	50 ml	screw cap	yes	+	10 / 130
690195		○ white	50 ml	filter screw cap		+	10 / 200
690195-TRI		○ white	50 ml	filter screw cap	yes	+	10 / 130
658190		○ white	250 ml	screw cap		+	5 / 120
658190-TRI		○ white	250 ml	screw cap	yes	+	5 / 90
658195		○ white	250 ml	filter screw cap		+	5 / 120
658195-TRI		○ white	250 ml	filter screw cap	yes	+	5 / 90
660190	flat	○ white	550 ml	screw cap		+	5 / 50
660190-TRI	flat	○ white	550 ml	screw cap	yes	+	5 / 40
661190	high	○ white	650 ml	screw cap		+	4 / 40
661195	high	○ white	650 ml	filter screw cap		+	4 / 40
661195-TRI	high	○ white	650 ml	filter screw cap	yes	+	4 / 28

Cell Culture Flasks - Cell-Repellent Surface*Raw material: PS, Surface treatment: cell-repellent*

Item no.	Flask design	Cap colour	Total volume	Cap design	Sterile	Qty. inner / outer
690980	flat	○ white	50 ml	screw cap	+	10 / 20
690985	flat	○ white	50 ml	filter screw cap	+	10 / 20
658980	flat	○ white	250 ml	screw cap	+	5 / 15
658985	flat	○ white	250 ml	filter screw cap	+	5 / 15
660980	flat	○ white	550 ml	screw cap	+	5 / 5
660985	flat	○ white	550 ml	filter screw cap	+	5 / 5
661980	high	○ white	650 ml	screw cap	+	4 / 4
661985	high	○ white	650 ml	filter screw cap	+	4 / 4

Dishes

wide range of formats



CELLSTAR® CELL CULTURE DISHES

Our CELLSTAR® cell culture dishes are manufactured to meet the highest quality standards at Greiner Bio-One.

This assortment of dishes offers a range of growth sizes from 8.7 to 143 cm². These dimensions are provided in nominal sizes of 35, 60, 100, and 145 mm. For culture dishes associated with growth areas of either 58 or 143 cm², we supply variants with side heights of 20 mm (for special applications). In addition to our standard formats we offer OneWell and FourWell Plates

with ANSI standard dimensions enabling easy automated handling. Our standard cell culture dishes have been treated in order to optimise growth and adhesion. Additional surface treatments are available for optimal adherent and suspension cell culture. Similar to all of our cell culture laboratory products, this range of dishes is packed user-friendly within sterile conditions. This allows technicians to safely handle their samples with a wide variety of cell culture methods without the risk of cell culture contamination.

- / **Maximal transparency for excellent microscopic analysis**
- / **Sterile and user-friendly packaging**
- / **Easy stacking**
- / **Various surface treatments for optimal cell culture**

CELLSTAR® CELLVIEW DISH

The CELLview culture dish combines the convenience of a standard size 35 mm disposable plastic cell culture dish with the optical quality of glass, providing superior high-resolution microscopic images of in vitro cultivated cultures.

It is made from high-grade polystyrene combined with an integrated glass bottom. The innovative design of the dish provides a single-plane, flat bottom with a consistent working distance and maximal planarity. Moreover, the dish bottom configuration facilitates optimal thermal conductivity and avoids thermal variations in heated platforms

used for live cell imaging. The subdivided version of CELLview Dish enables simultaneous multiplex analyses of different cell lines, various stimulations or diverse transfections. Quartering the cell culture dish provides four individual compartments with a growth area of approximately 1.9 cm², allowing minimisation of cells and reagents required per individual assay. In addition to the untreated glass surface, Greiner Bio-One provides a tissue culture surface as well as the Advanced TC surface modification to enhance the attachment of adherent cells, thus eliminating the need for protein coating.

CELLVIEW DISH AUTOFLASK

Ideal for high resolution microscopic imaging

- / High quality cover glass bottom
- / Maximal spectral transmission
- / Innovative design guarantees maximal planarity and stable focal plane
- / No autofluorescence, no depolarisation of light



Embedded glass bottom for
maximal planarity

PRODUCT OVERVIEW

CELL CULTURE DISHES

Cell Culture Dishes

Surface treatment: TC, Ventnock: yes

Item no.	Compartment-ments	Height	Ø nominal size	Growth area	Growth area / unit	Working volume	Total volume	Triple-packed	Sterile	Qty. inner / outer
627160		10 mm	35 mm	8.7 cm ²		≥3 ml	10 ml		+	10 / 740
627170	4	10 mm	35 mm		0.93 cm ²	≥0.08 ml	9 ml		+	10 / 740
628160		15 mm	60 mm	21 cm ²		6 ml - 7 ml	28 ml		+	10 / 600
628160-TRI		15 mm	60 mm	21 cm ²		6 ml - 7 ml	28 ml	yes	+	10 / 300
664160		20 mm	100 mm	58 cm ²		16 ml - 17 ml	100 ml		+	15 / 360
664160-TRI		20 mm	100 mm	58 cm ²		16 ml - 17 ml	100 ml	yes	+	15 / 180
639160		20 mm	145 mm	143 cm ²		25 ml - 27 ml	240 ml		+	5 / 120
639160-TRI		20 mm	145 mm	143 cm ²		25 ml - 27 ml	240 ml	yes	+	5 / 120

Cell Culture Dishes - Advanced TC

Surface treatment: Advanced TC, Ventnock: yes

Item no.	Height	Ø nominal size	Growth area	Working volume	Total volume	Sterile	Qty. inner / outer
627960	10 mm	35 mm	8.7 cm ²	≤3 ml	10 ml	+	10 / 740
628960	15 mm	60 mm	21 cm ²	6 ml - 7 ml	28 ml	+	10 / 600
664960	20 mm	100 mm	58 cm ²	16 ml - 17 ml	100 ml	+	15 / 360
639960	20 mm	145 mm	143 cm ²	25 ml - 27 ml	240 ml	+	5 / 120

Cell Culture Dishes - CELLCOAT®

Surface treatment: CELLCOAT®, Ventnock: yes

Item no.	Height	Ø nominal size	Growth area	Protein coating	Working volume	Total volume	Qty. inner / outer
628950	15 mm	60 mm	21 cm ²	Collagen Type I	6 ml - 7 ml	28 ml	20 / 100
664950	20 mm	100 mm	58 cm ²	Collagen Type I	16 ml - 17 ml	100 ml	10 / 40
628940	15 mm	60 mm	21 cm ²	Poly-D-Lysine	6 ml - 7 ml	28 ml	20 / 100
664940	20 mm	100 mm	58 cm ²	Poly-D-Lysine	16 ml - 17 ml	100 ml	10 / 40
628930	15 mm	60 mm	21 cm ²	Poly-L-Lysine	6 ml - 7 ml	28 ml	20 / 100
628920	15 mm	60 mm	21 cm ²	Fibronectin	6 ml - 7 ml	28 ml	5 / 20
664920	20 mm	100 mm	58 cm ²	Fibronectin	16 ml - 17 ml	100 ml	5 / 10
628910	15 mm	60 mm	21 cm ²	Laminin	6 ml - 7 ml	28 ml	5 / 20
664910	20 mm	100 mm	58 cm ²	Laminin	16 ml - 17 ml	100 ml	10 / 10

CELL CULTURE DISHES

Cell Culture Dishes - Cell-Repellent Surface

Raw material: PS, Surface treatment: cell-repellent, Vent neck: yes

Item no.	Height	Ø nominal size	Working volume	Total volume	Sterile	Qty. inner / outer
627979	10 mm	35 mm	≤3 ml	10 ml	+	10 / 40
628979	15 mm	60 mm	6 ml - 7 ml	28 ml	+	10 / 20
664970	20 mm	100 mm	16 ml - 17 ml	100 ml	+	1 / 5

OneWell Plate & FourWell Plate

Height: 14.4 mm, Length: 127.8 mm, Width: 85.5 mm, Lid: yes, Vent neck: yes

Item no.	Well format	Growth area	Surface treatment	Product colour	Total volume (well)	Sterile	Qty. inner / outer
96077307	4		suspension	○ clear	18.6 ml	+	8 / 32
670190	1	95 cm ²	suspension	○ clear	113.7 ml	+	8 / 32
670180	1	95 cm ²	TC	○ clear	113.7 ml	+	8 / 32

CELLview Dish

Height: 10 mm, Ø: 35 mm, Bottom: glass, Vent neck: yes

Item no.	Compartment	Growth area	Growth area / unit	Surface treatment	Working volume	Total volume	Total volume (well)	Working volume (well)	Sterile	Qty. inner / outer
627861	1	8.7 cm ²		untreated	2.5 ml - 5 ml	10 ml			+	10 / 40
627860	1	8.7 cm ²		TC	2.5 ml - 5 ml	10 ml			+	10 / 40
627965	1	8.7 cm ²		Advanced TC	2.5 ml - 5 ml	10 ml			+	10 / 40
627871	4		1.9 cm ²	untreated			1.5 ml	0.1 ml - 0.5 ml	+	10 / 40
627870	4		1.9 cm ²	TC			1.5 ml	0.1 ml - 0.5 ml	+	10 / 40
627975	4		1.9 cm ²	Advanced TC			1.5 ml	0.1 ml - 0.5 ml	+	10 / 40

CELLSTAR® CELL CULTURE MULTIWELL PLATES

For both adherent and suspension cell culture, choose Greiner Bio-One's multiwell plates in either 6, 12, 24 or 48 well format.

The special chimney wells in conjunction with low evaporation lids significantly reduce the risk of cross-contamination between the wells. The plates are easily stacked, both with and without lids. Due to their advanced design, the

plates still exhibit important features like constant heat and gas exchange even when stacked. Uniform plate dimensions (well depth, diameter and distance between the wells) comply with ANSI standards, enabling easy manual and automated handling. Each plate is sterile, free of detectable DNase, RNase, human DNA, is non-pyrogenic and has a printed lot number for traceability.

- / Various surface treatment for optimal adherent and suspension cell culture
- / High clarity and low autofluorescence
- / Alphanumeric well coding
- / ANSI standard, compatible with connectal instruments and automated systems

Multiwell Plates

6 / 12 / 24 / 48 Well Format



PRODUCT OVERVIEW

CELL CULTURE MULTIWELL PLATES

Multiwell Plates - 6 / 12 / 24 / 48 Well Format

Bottom: solid, Lid: yes, condensation rings

Item no.	Well format	Growth area / unit	Raw material	Surface treatment	Product colour	Total volume (well)	Working volume (well)	Sterile	Qty. inner / outer
657160	6	9.6 cm ²		TC	○ clear	16 ml	2 ml - 5 ml	+	1 / 100
665180	12	3.9 cm ²	PS	TC	○ clear	6.5 ml	2 ml - 4 ml	+	1 / 100
662160	24	1.9 cm ²		TC	○ clear	3.3 ml	0.5 ml - 1.5 ml	+	1 / 100
677180	48	1 cm ²		TC	○ clear	1.7 ml	0.5 ml - 1 ml	+	1 / 100
657185	6			suspension	○ clear	16 ml		+	1 / 100
665102	12		PS	suspension	○ clear	6.5 ml		+	1 / 100
662102	24			suspension	○ clear	3.3 ml		+	1 / 100
677102	48			suspension	○ clear	1.7 ml		+	1 / 100

Multiwell Plates - Advanced TC

Bottom: solid, Surface treatment: Advanced TC, Lid: yes, condensation rings

Item no.	Well format	Growth area / unit	Raw material	Product colour	Total volume (well)	Working volume (well)	Sterile	Qty. inner / outer
657960	6	9.6 cm ²		○ clear	16 ml	2 ml - 5 ml	+	1 / 100
665980	12	3.9 cm ²	PS	○ clear	6.5 ml	2 ml - 4 ml	+	1 / 100
662960	24	1.9 cm ²		○ clear	3.3 ml	0.5 ml - 1.5 ml	+	1 / 100
677980	48	1 cm ²		○ clear	1.7 ml	0.5 ml - 1 ml	+	1 / 100

Multiwell Plates - CELLCOAT®

Bottom: solid, Surface treatment: CELLCOAT®, Lid: yes, condensation rings

Item no.	Well format	Growth area / unit	Protein coating	Product colour	Total volume (well)	Working volume (well)	Qty. inner / outer
657950	6	9.6 cm ²	Collagen Type I	○ clear	16.1 ml	2 ml - 5 ml	5 / 50
662950	24	1.9 cm ²	Collagen Type I	○ clear	3.3 ml	0.5 ml - 1 ml	5 / 50
657940	6	9.6 cm ²	Poly-D-Lysine	○ clear	16.1 ml	2 ml - 5 ml	5 / 50
662940	24	1.9 cm ²	Poly-D-Lysine	○ clear	3.3 ml	0.5 ml - 1 ml	5 / 50
657930	6	9.6 cm ²	Poly-L-Lysine	○ clear	16.1 ml	2 ml - 5 ml	5 / 50
662930	24	1.9 cm ²	Poly-L-Lysine	○ clear	3.3 ml	0.5 ml - 1 ml	5 / 50

Multiwell Plates - Cell-Repellent Surface

Well profile: F-bottom, Bottom: solid, Raw material: PS, Surface treatment: cell-repellent, Lid: yes, condensation rings

Item no.	Well format	Product colour	Total volume (well)	Working volume (well)	Sterile	Qty. inner / outer
657970	6	○ clear	16.1 ml	2 ml - 5 ml	+	1 / 5
662970	24	○ clear	3.3 ml	0.5 ml - 1.5 ml	+	1 / 5
677970	48	○ clear	1.7 ml	0.5 ml - 1 ml	+	1 / 5

CELLSTAR® 96 WELL MICROPLATES

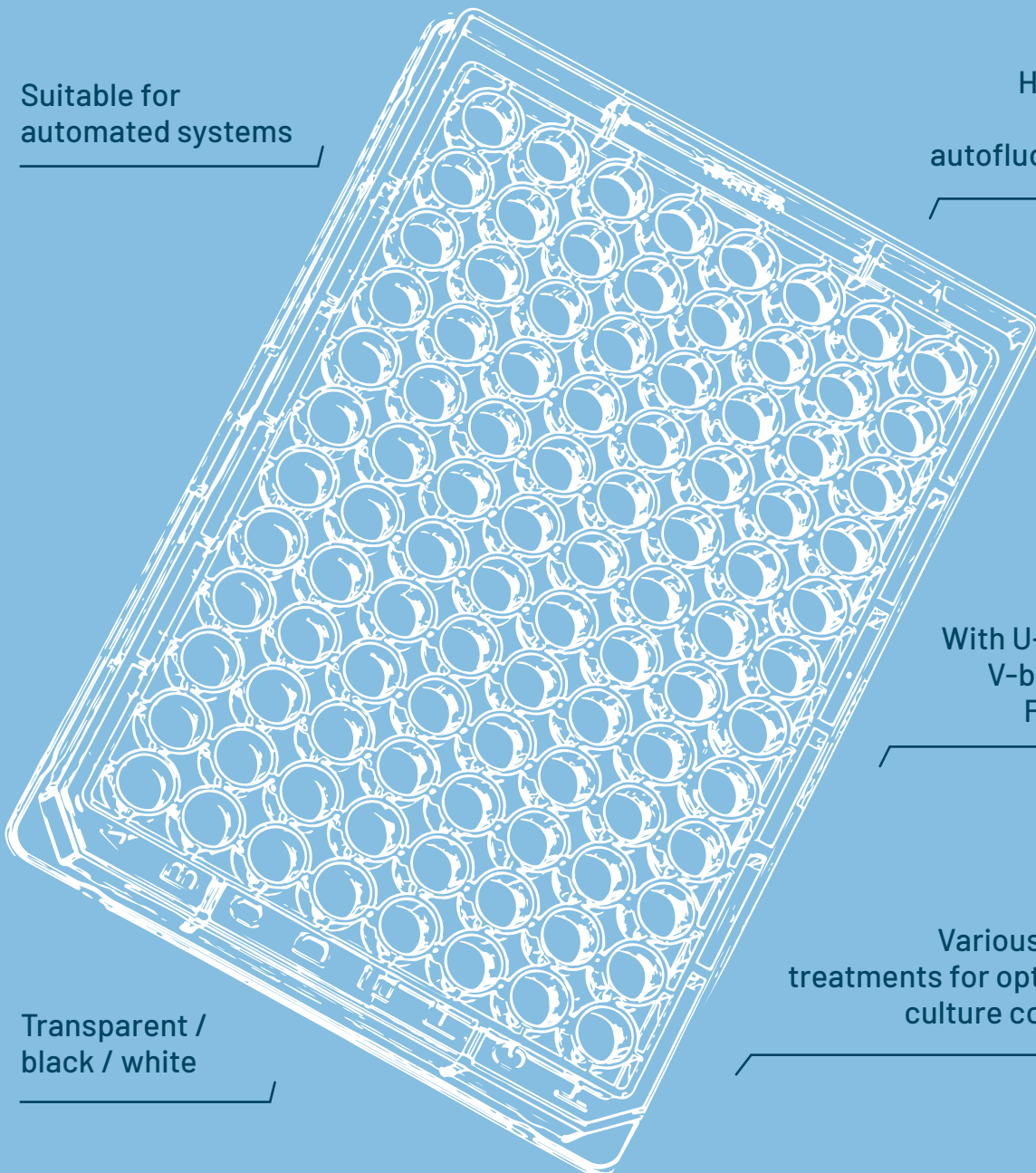
Suitable for
automated systems

High clarity
and low
autofluorescence

With U-bottom,
V-bottom or
F-bottom

Various surface
treatments for optimal cell
culture conditions

Transparent /
black / white



CELLSTAR® CELL CULTURE MICROPLATES

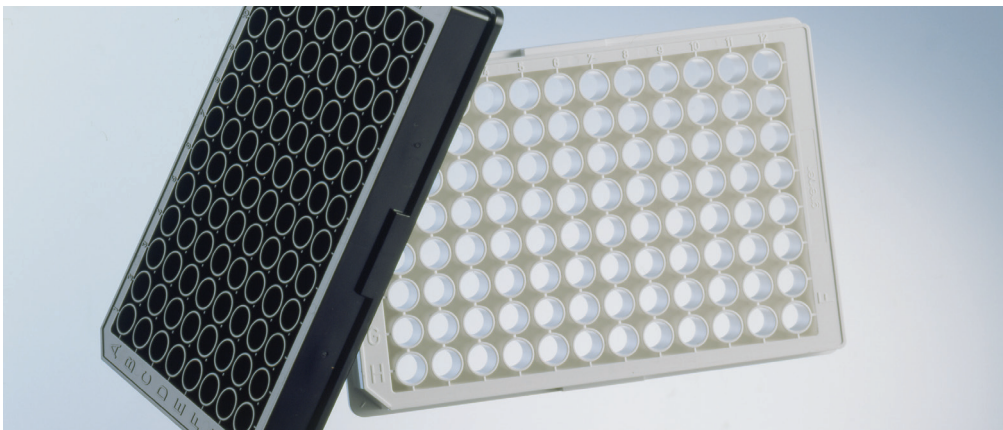
Cell culture treated microplates in 96-well format are suitable for the cultivation and examination of a large number of samples.

Depending on the application, the well profile is a key feature in a 96 well cell culture microplate. The chimney well cell culture microplate has the same well profile as the standard F-bottom plate. The difference to the standard plate is the chimney-like arrangement of the wells i.e. each well stands on its own. Therefore the risk of contamination from sample material being carried over is minimised. Clear-bottom microplates have pigmented walls and a transparent thin

film bottom, the so-called μ Clear® bottom. In contrast to our standard microplates with a solid polystyrene bottom, they are ideal for cell culture and microscopic applications using fluorescence or luminescence detection methods.

For many applications, a reduction of the sample volume is an important feature. 96 well half area microplates offer an interesting alternative here. They can be pipetted automatically as well as manually without any problem and allow a reduction of the sample volume up to 50 %.

- / Lid enables gas exchange with the least possible evaporation
- / Chimney bottom design, raised edges and lid with condensation rings prevent cross-contamination
- / 96-well microplates with half the surface allow 50 % reduction in sample volume
- / Cell culture treated microplates are also available in 384- and 1536-well formats



MORE FORMATS

To explore our world of microplates, take a look at our microplate selection guide (F073048).

PRODUCT OVERVIEW

CELL CULTURE MICROPLATES - 96 WELL

Cell Culture Microplates - 96 Well

Well format: 96, Bottom: solid, Raw material: PS, Surface treatment: TC

Item no.	Growth area / unit	Well profile	Product colour	Working volume (well)	Lid	Sterile	Qty. inner / outer
650160	35 mm ²	U-bottom	○ clear	40 µl - 280 µl	no	+	1 / 100
650180	35 mm ²	U-bottom	○ clear	40 µl - 280 µl	yes	+	1 / 100
651160	28 mm ²	V-bottom	○ clear	40 µl - 200 µl	no	+	1 / 100
651180	28 mm ²	V-bottom	○ clear	40 µl - 200 µl	yes	+	1 / 100
655160	34 mm ²	F-bottom / Chimney Well	○ clear	25 µl - 340 µl	no	+	1 / 100
655162	34 mm ²	F-bottom / Chimney Well	○ clear	25 µl - 340 µl	no	+	5 / 100
655180	34 mm ²	F-bottom / Chimney Well	○ clear	25 µl - 340 µl	yes, yes, condensation rings	+	1 / 100
655182	34 mm ²	F-bottom / Chimney Well	○ clear	25 µl - 340 µl	yes, yes, condensation rings	+	10 / 160
655073	34 mm ²	F-bottom / Chimney Well	○ white	25 µl - 340 µl	no	+	10 / 40
655083	34 mm ²	F-bottom / Chimney Well	○ white	25 µl - 340 µl	yes, yes, condensation rings	+	8 / 32
655079	34 mm ²	F-bottom / Chimney Well	● black	25 µl - 340 µl	no	+	10 / 40
655086	34 mm ²	F-bottom / Chimney Well	● black	25 µl - 340 µl	yes, yes, condensation rings	+	8 / 32

Cell Culture Microplates - 96 Well - µClear®

Well format: 96, Growth area / unit: 34 mm², Well profile: F-bottom / Chimney Well, Bottom: µClear®, Raw material: PS, Surface treatment: TC, Working volume (well): 25 µl - 340 µl

Item no.	Product colour	Lid	Sterile	Qty. inner / outer
655088	○ white	no	+	10 / 40
655098	○ white	yes, condensation rings	+	8 / 32
655087	● black	no	+	10 / 40
655090	● black	yes, condensation rings	+	8 / 32

CELL CULTURE MICROPLATES - 96 WELL

Cell Culture Microplates - 96 Well - Half Area

Well format: 96, Growth area / unit: 15 mm², Well profile: F-bottom, Raw material: PS, Surface treatment: TC, Plate design: half area, Working volume (well): 15 µl - 175 µl, Lid: yes

Item no.	Bottom	Product colour	Sterile	Qty. inner / outer
675180	solid	○ clear	+	8 / 32
675083	solid	○ white	+	8 / 32
675086	solid	● black	+	8 / 32
675090	µClear®	● black	+	8 / 32

Cell Culture Microplates - 96 Well - CELLCOAT®

Well format: 96, Growth area / unit: 34 mm², Well profile: F-bottom / Chimney Well, Raw material: PS, Surface treatment: CELLCOAT®, Working volume (well): 25 µl - 340 µl

Item no.	Bottom	Protein coating	Product colour	Lid	Qty. inner / outer
655950	solid	Collagen Type I	○ clear	yes, condensation rings	5 / 20
655956	µClear®	Collagen Type I	● black	yes, condensation rings	5 / 20
655940	solid	Poly-D-Lysine	○ clear	yes, condensation rings	5 / 20
655944	µClear®	Poly-D-Lysine	○ white	yes, condensation rings	5 / 20
655946	µClear®	Poly-D-Lysine	● black	yes	5 / 20
655948	µClear®	Poly-D-Lysine	● black	yes, condensation rings	20 / 120
655930	solid	Poly-L-Lysine	○ clear	yes, condensation rings	5 / 20
655936	µClear®	Poly-L-Lysine	● black	yes, condensation rings	5 / 20

Cell Culture Microplates - 96 Well - Advanced TC

Well format: 96, Growth area / unit: 34 mm², Well profile: F-bottom / Chimney Well, Raw material: PS, Surface treatment: Advanced TC, Working volume (well): 25 µl - 340 µl, Lid: yes, condensation rings

Item no.	Bottom	Product colour	Sterile	Qty. inner / outer
655980	solid	○ clear	+	1 / 100
655983	µClear®	○ white	+	8 / 32
655986	µClear®	● black	+	8 / 32

Suspension Culture Microplates - 96 Well

Well format: 96, Bottom: solid, Raw material: PS, Surface treatment: suspension

Item no.	Well profile	Product colour	Working volume (well)	Lid	Sterile	Qty. inner / outer
650185	U-bottom	○ clear	40 µl - 280 µl	yes	+	60 / 240
655185	F-bottom / Chimney Well	○ clear	25 µl - 340 µl	yes, condensation rings	+	60 / 240

making a difference

www.gbo.com

GREINER BIO-ONE GMBH
FRICKENHAUSEN, GERMANY

PHONE +49 7022 948-0
FAX +49 7022 948-514
E-MAIL info@de.gbo.com



GREINER BIO-ONE IS A GLOBAL PLAYER.
FIND THE CONTACT DETAILS OF YOUR
LOCAL PARTNER ON OUR WEBSITE.



Devices of Greiner Bio-One are to be used by properly qualified persons only in accordance with the relevant Instructions for Use (IFU), where applicable. For more information contact your local Greiner Bio-One sales representative or visit our website (www.gbo.com).

All information is provided without guarantee despite careful processing. Any liability, warranty or guarantee of Greiner Bio-One GmbH is excluded. All rights, errors and changes are reserved. If not stated otherwise, Greiner Bio-One GmbH has all copyrights and/or other (user-) rights in this documents, in particular to signs such as the mentioned (word-picture-) brands and logos. Any use, duplication or any other use of the rights of Greiner Bio-One GmbH is expressly prohibited. Media owner: Greiner Bio-One GmbH / Represented by Managing Directors Jakob Breuer and Heinz Schmid. The company is registered in the Commercial Register at the first instance court in Stuttgart, HRB 224604 / VAT Number: DE812585719.

F071067 en [rev. 06.2022]


greiner
BIO-ONE